



Scada large format slabs at the entrance plaza of IMEC in Leuven, BELGIUM

Location: Belgium, Leuven

Paving & Slabs

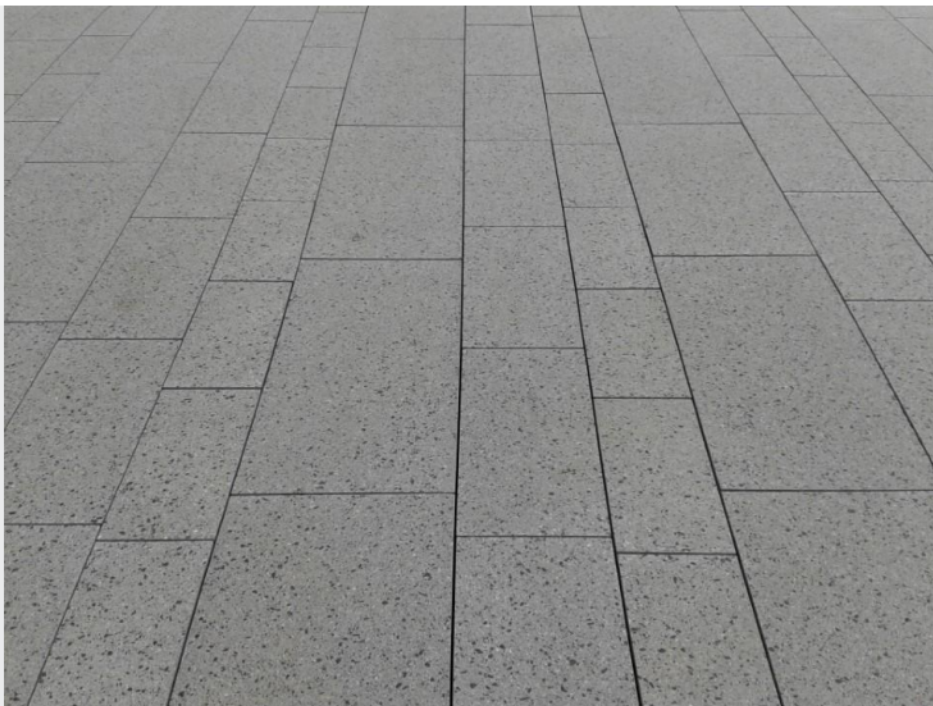
Project details

The entrance plaza in front of IMEC's new tower building in Leuven has been paved with Scada large size slabs in 3 different formats. IMEC, the largest nanotechnology research centre, built a new office building (design Baumschlager Eberle). The entrance square at the foot accompanies the tower and was designed by BUUR in close collaboration with Stéphane Beel architects. For the paving, the designer BUUR chose Scada large size slabs. Three different sizes in one colour...

> Scada pavement

Related products

> GDM SCENIC stone



URBASTYLE
MOBILIER URBAIN EN BÉTON



