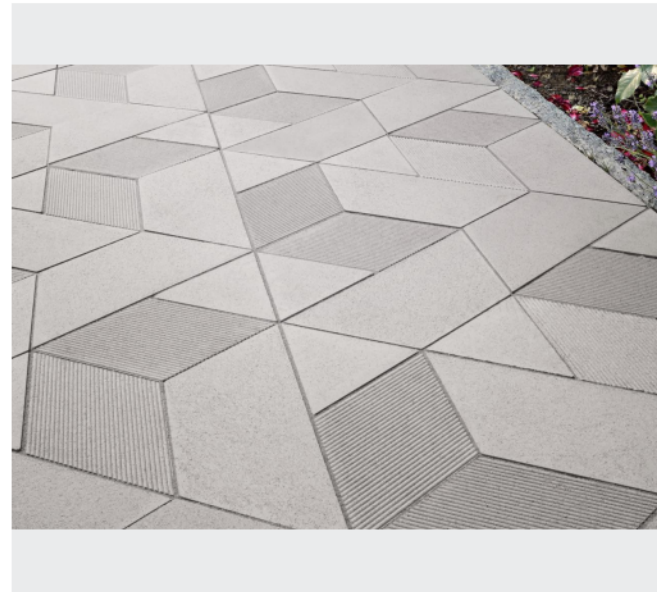


DEDALE, grooved hexagonal paving slabs

by CCHE Lausanne SA



URBASTYLE
CONCRETE STREET FURNITURE



Measurements

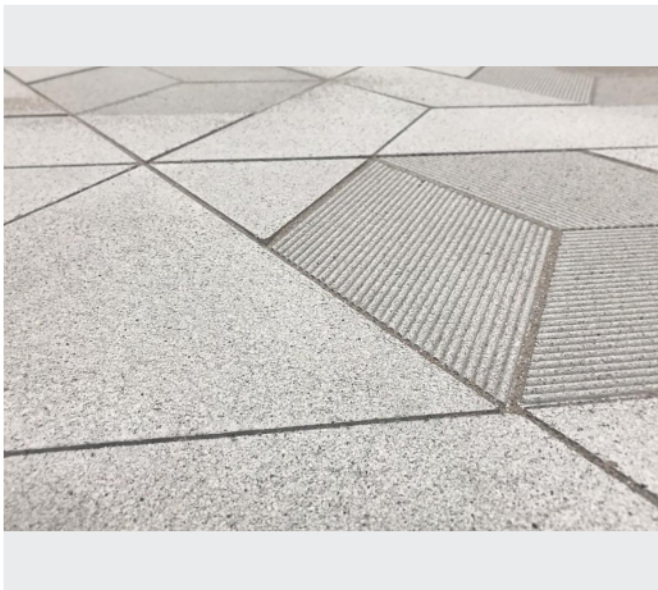
- ✓ Dedale 25 - 50/43,3/5 cm
- ✓ Dedale 50 - 100/86,6/12 cm

The combination of the partially grooved surface, the hexagonal shape and its modularity creates the unique design of the Dedale paving slab. The Dedale range of precast concrete paving slabs is characterized by its partially grooved hexagonal shape. The two sizes, Dedale 25 and Dedale 50, offer unlimited compositions. Once assembled, and depending on the chosen orientation, Dedale...

Colours and Finishings

- ✓ FERRO
- ✓ NATIVO

Handling



Accessibility