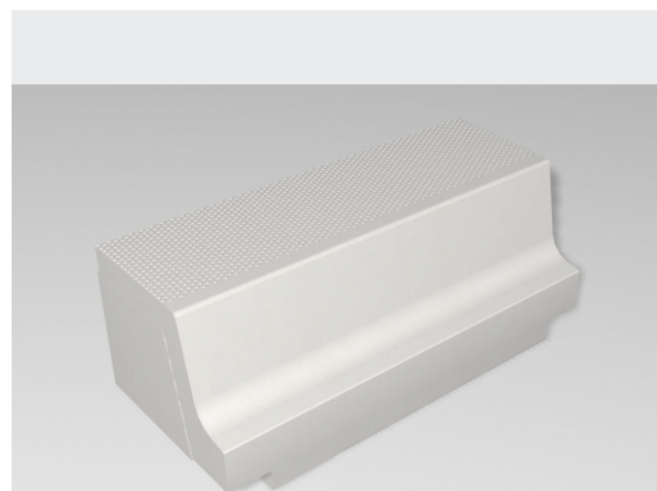


Bus Kerbstone 1.18



URBASTYLE
CONCRETE STREET FURNITURE



Measurements

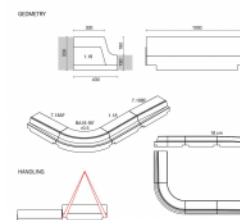
- ✓ 1.18: 1000x430x330 - 302 kgs
- ✓ 7.18 AF: 1000x430x330/290 - 275 kg
- ✓ 7.18 BF: 1000x430x330/290 - 275 kg
- ✓ 7.18 AFS: 1000x430x330/290 - 275 kg
- ✓ 7.18 BFS: 1000x430x330/290 - 275 kg
- ✓ Corner element BA18-90° - r 0,5: 985x985x430x330 - 240 kg

The Bus Kerbstone 1.18 gives easy access to the bus Kerbstones for buses makes accessibility to buses extremely convenient. The step and opening between the boarder and bus is kept to a minimum. This also ensures that getting on the bus is easy for the disabled. Thanks to the recesses at the bottom on each side, the kerbstones in concrete can easily be placed with hoisting...

Colours and Finishings

- ✓ VISIA

Handling



Accessibility

