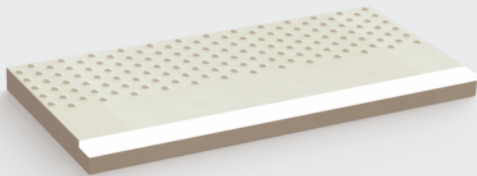


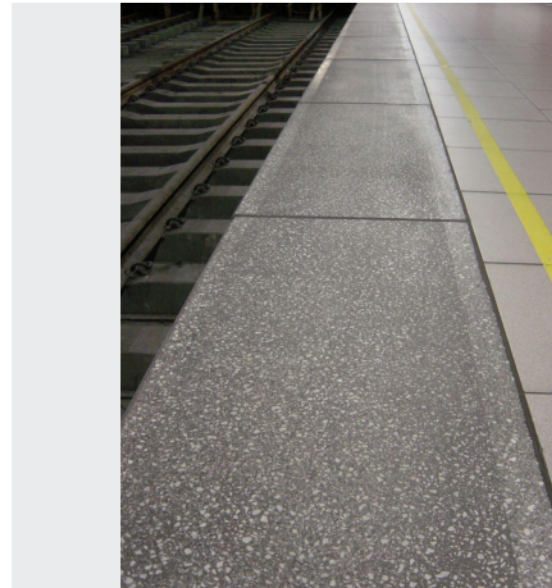
Platform edges



One of our great areas of expertise. SNCF Our production site is qualified by SNCF and we have delivered products for several stations already RISQS We are certified for UK SNCB-NMBS We are recognized providers for Belgium NS We are recognized providers for The Netherlands INNOVATION: we have also developed a unique tactile slab with an exclusive LED visual warning connected with the approach of a train to equip or renovate your railway, metro stations, tram and bus stops. This will prevent numerous regular accidents that happen too regularly still today. Discover a small movie about the principle we developed in 2013 [HERE](#). We have developed a new version with long LED strips and colour change presented in 2015 as world premiere at SIFER Lille. [CONTACT US](#) to install that technology in your city, railway station or network! ...

Colours and Finishings

- ✓ VISIA
- ✓ FERRO
- ✓ STRUCTURE - TEXTURE



Measurements

✓ 40-250x40-120x6-14 cm

✓ With nose: 40-250x40-120x10-30 cm