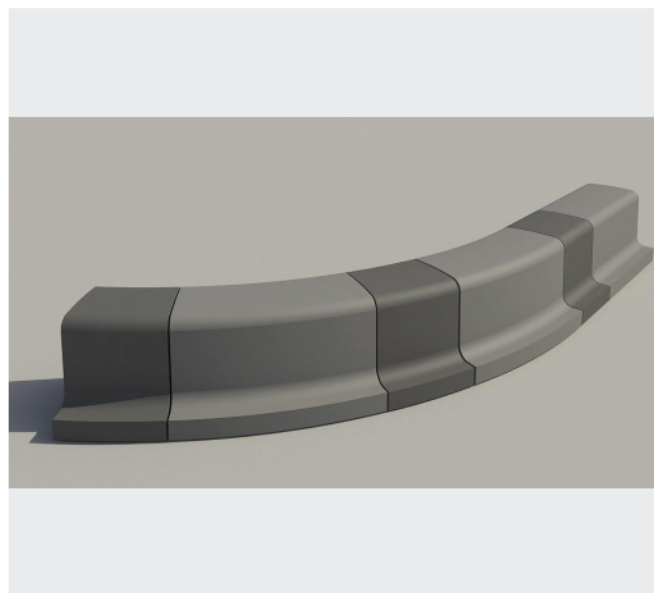


Bench Playground



URBASTYLE
CONCRETE STREET FURNITURE



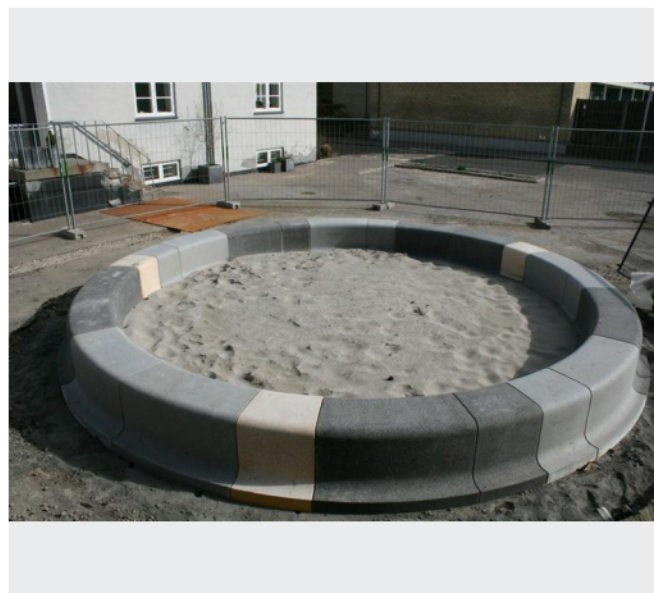
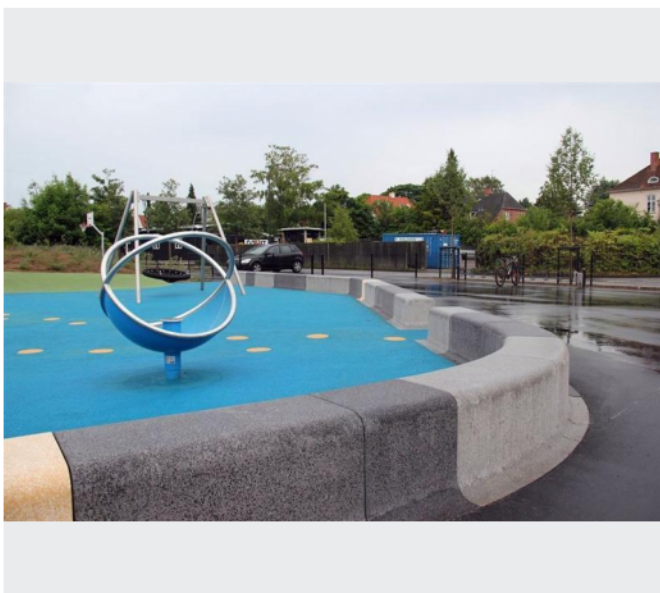
Anchoring

- ✓ Free standing
- ✓ To fix in ground with concrete

Measurements

- ✓ Straight element 50/74/45-55 cm - 336 kg
- ✓ Straight element 100/74/45-55 cm - 672 kg
- ✓ Curved element (inner radius 245 cm) 50/74/45-55 cm - 336 kg
- ✓ Curved element (inner radius 245 cm) 100/74/45-55 cm - 672 kg
- ✓ End element 100-114/74/45-55 cm - 648 kg

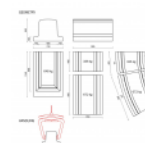
Bench Playground, ideal for every playground 2 straight, 2 curved and 1 closing piece. The concrete Bench Playground was originally designed to demarcate a play area, but can certainly also be used for other applications such as concrete street furniture. Sharp corners have been replaced by large rounded edges. Accessible to a large audience, and certainly ideal for the youngest among us...



Colours and Finishings

- ✓ FERRO
- ✓ FINO
- ✓ FINERRO

Handling



Accessibility

