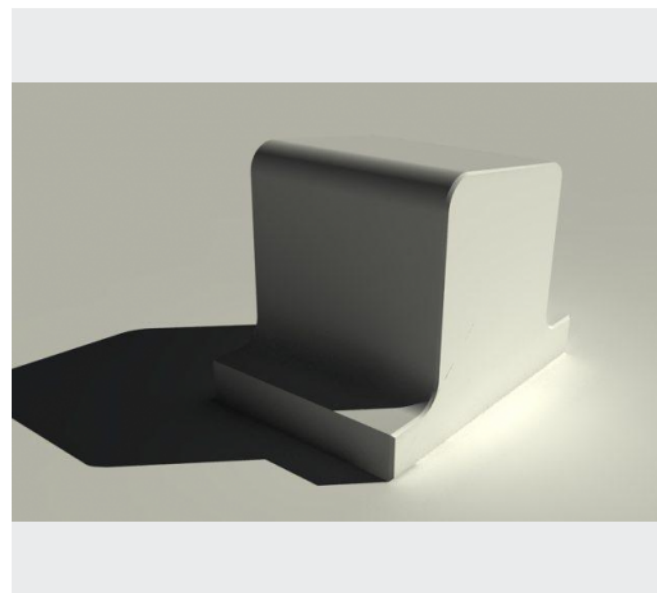


# Bench Rubens



URBASTYLE  
CONCRETE STREET FURNITURE



## Anchoring

- ✓ Free standing
- ✓ To fix in ground with concrete

## Measurements

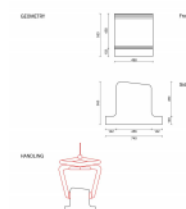
- ✓ Rubens straight - 55,3/49,8/74 cm - 348 kg
- ✓ Rubens start/end - 65/55/74 cm - 374 kg
- ✓ Rubens - curved - inner radius 245 cm - 387 kg

Public Bench Rubens created for Rubensplein, Knokke-Heist In Knokke, street furniture was created by placing separate small elements of the Rubens bench next to each other. You can play with straight, curved, starting pieces and/or end pieces. If you only use curved elements, you get a circle with an inner radius of 245cm. This bench Rubens can be used as a planter, sandpit,...

## Colours and Finishings

- ✓ FERRO
- ✓ FINO
- ✓ FINERRO

## Handling



## Accessibility

